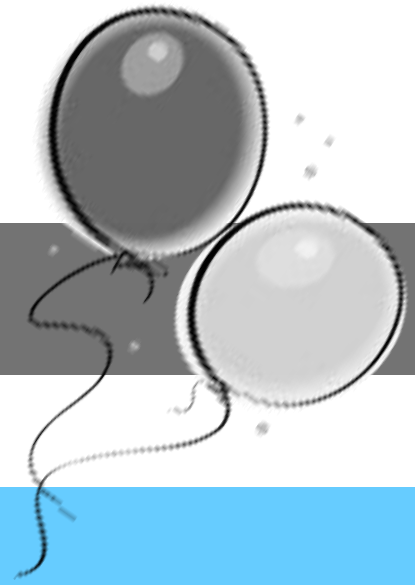


**Thursday  
Sept. 5th**

**7:30**

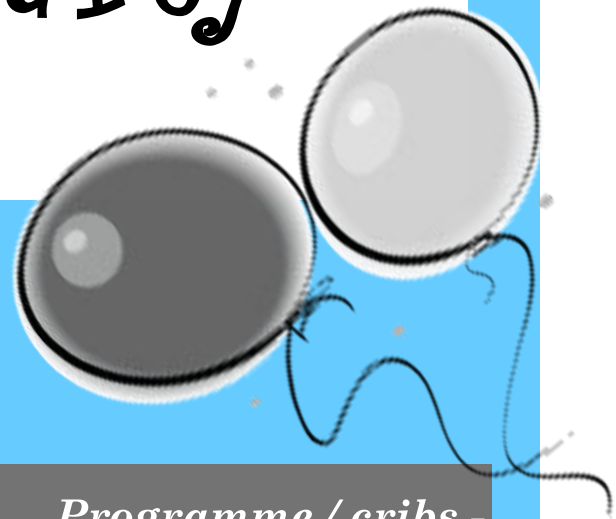


*RSCDS New York  
Branch*

*Admission \$12  
(\$15 non-members)*

*Community Center  
St. Bartholomew's  
Episcopal Church  
109 East 50th Street  
New York, NY*

# Opening Party



*Programme / cribs -  
see over.....*

**THE SHETLAND SHEPHERDESS (J8x32) 3C (4C set)****Ron Wallace RSCDS Graded 3**

- 1-8 1s dance down between 2s, cast back to places. 1s dance 1/2 Fig. 8 round 2s
- 9-16 1s+2s+3s dance mirror (mirror) reels of 3 on sides (1s cross to 2nd place own sides to begin, 2s out & up, 3s in & up). 2s finish facing out
- 17-20 1s+2s change places on sides (Men RH, Ladies LH), 1s+3s turn on sides (Men LH, Ladies RH) 1s ending in middle facing up, 3s in original places
- 21-24 1s dance up to top and cast to 2nd place
- 25-32 2s+1s+3s Adv+Ret, all clap end bar 28. 2s+1s+3s turn partners RH once round

**ON THE QUARTER DECK (R8x32) 2C (4C Set)****Iain Boyd Harbour City**

- 1-8 1s set & cross over RH, set & 3/4 turn RH
- 9-16 1s dance RH across with 2M & LH across with 2L
- 17-24 1L followed by 1M dance down for 2 & 1M followed by 1L dance up for 2, both cast on Ladies side & 1M crosses to 2nd place own side
- 25-32 2s+1s R&L

**FAIR DONALD (S8x32) 3C (4C set) RSCDS Bk 29**

- 1-8 1s dance down 1 place & cast up on own side to places, dance down 2 places & cast up on own side & face 1st corners
- 9-16 1s dance diagonal Reel of 4 with 1st corners & pass partner LSh to face 2nd corners
- 17-24 1s dance diagonal Reel of 4 with 2nd corners & end in centre facing up between 2s
- 25-32 1s cast to 2nd place & 2s+1s+3s set, 2s+1s+3s turn partners 2H

**ITCHY FEET (J8x32) 3C (4C set)**

- 1-8 1c set | cast off (2c up) ; turn RH 1½ to face 1cnrs
- 9-16 1c ½ Reel4 with 1cnrs, at end pass Rsh to face 2cnrs ; 1c ½ Reel4 with 2cnrs to 2plx (3x,1x,2x)
- 17-24 All S&Link3 twice (2,1,3)
- 25-32 Circle6 and back

**\*\*\*BARBARA'S STRATHSPEY\*\*\* (S8x32) 3C (4C set)****Sue McKinnell RSCDS Bk 46**

- 1-8 1s set & cast 1 place, 1s dance 1/2 Fig of 8 (1M round 2s, 1L round 3s)
- 9-16 2s+1s+3s set & 1s cross passing RSh, 2M+1M also 1L+3L turn RH 1.1/2 times on sides
- 17-24 1s+2s+3s dance 3 couple Bourrel: -  
17-20 1M+3L also 2M+1L set advcg & 3/4 turn 2H to line up/down middle then 1/2 turn single to face own prtners as 3M & 2L chase anticl'wise to face them  
21-24 All set & turn 2H to own sides. 3 1 2
- 25-32 All chase clockwise 1/2 way, all 1/2 turn partners RH & twirl to places. 2 1 3

**ORPINGTON CALEDONIANS (R8x32) 3C (4C set)****John Brenchley RSCDS Bk 49**

- 1-8 1s set, 1L casts & followed by 1M, dances across to 2M's place facing out (2s step up 5-6). 1L+3M also 1M+3L 1/2 turn LH & Men face out
- 9-16 3s+1s dance Ladies' Chain, 1M finishes facing out
- 17-24 1M followed by 1L casts up, dances across to 2M place (3s step down 19-20). 2s+1s dance RH across. 1M & 2L face out
- 25-32 2s+1s+3s dance reels of 3 on sides (1s+3s pass LSh to start)

**TEA TIME!****CUTTY SARK (J8x32) 3C (4C set) RSCDS Bk 40**

- 1-8 1s cast down own sides & cast back to 2nd place
- 9-16 2s+1s dance RH across & LH back
- 17-24 1s turn RH to face 1st corners, turn 1st corner LH, turn 2nd corner RH & cross LH to 2nd places own sides
- 25-32 2s+1s+3s Adv+Ret & turn RH

**THE DANCING BEES (R8x32) 3C (4C set)****Roy Goldring 24 G & S Dances**

- 1-8 1s lead down the middle & back to face 2L in prom hold
- 9-16 1s dance reel of 3 across with 2s (giving RSh to 2L)
- 17-24 1s dance reel of 3 across with 3s (LSh to 3L) ending in the middle (Man facing down & Lady facing up to partner)
- 25-32 1s set in middle, petronella to 2nd place own sides & 2s+1s+3s turn RH (4 bars)

**TRIPLE HAPPINESS (S3x32) 3C Yoshiki Oyama RSCDS Bk 52**

- 1-8 1s Adv+Ret (1 step each) touching hands, 1s 1/2 turn LH, cross down between 2s & 3s, cast up to place
- 9-16 1s+2s dance the Knot. 1s end facing 1st corners
- 17-24 Corners Pass & Turn with 1st corners, pass RSh, Repeat with 2nd corner & 1s pass RSh into 2nd place own sides (corners turn 2H in centre)
- 25-32 All chase clockwise 1/2 round to opp sides, all 1/2 turn 2H, pull back RSh & dance out to own sides 3 1 2

**NAPIER'S INDEX (J8x40) 3C (4C Set)****Brian Charlton RSCDS Bk 45**

- 1-8 1s set & cast 1 place, turn LH 1.1/4 times to end in Bal-in-Line position between 1st corners
- 9-16 1s+1st corners Bal-in-Line & turn corners RH (4 bars) to Bal-in-Line again with 1st corners
- 17-24 1s dance reel of 3 on sides (LSh to 2nd corner) & end diagonally between 2nd corners
- 25-32 1s+2nd corners Bal-in-Line & turn corners RH (4 bars), Bal-in-Line again with 2nd corners
- 33-40 1s dance reels of 3 across (LSh to 3rd corners) & cross RH to 2nd places

**ASILOMAR ROMANTIC (S8x32) 3C (4C set)****T Cuthbertson San Fransisco Coll 2**

- 1-8 1s+3s dance double Fig of 8 around 2s, 1s crossing down to start
- 9-16 1s+2s dance Diamond Poussette
- 17-24 1s dance in & down between 2s (2s step up), set to each other & dance RSh round 4th corner to face own 1st corner
- 25-32 1s dance 'Hello-Goodbye' setting ending with petronella turn to 2nd places

**TRIP TO TIMBER RIDGE (R8x32) 3C (4C set)****Linda Henderson Heart of San Francisco & RSCDS Bk 52**

- 1-8 1s turn RH, cast (2s step up) then 1L+2s & 1M+3s dance RH across. 1s end facing 1st corners
- 9-16 1s dance Corner Pass+Turn with 1st corners, pass RSh & repeat with 2nd corners. 1s pull back RSh to end BtoB in centre facing opp sides
- 17-24 2s+1s+3s dance Double Triangles. Bars 23-24 1s petronella turn to 2nd place own sides
- 25-32 2s+1s+3s circle 6H round and back

**\*\*\*For experienced dancers only\*\*\***